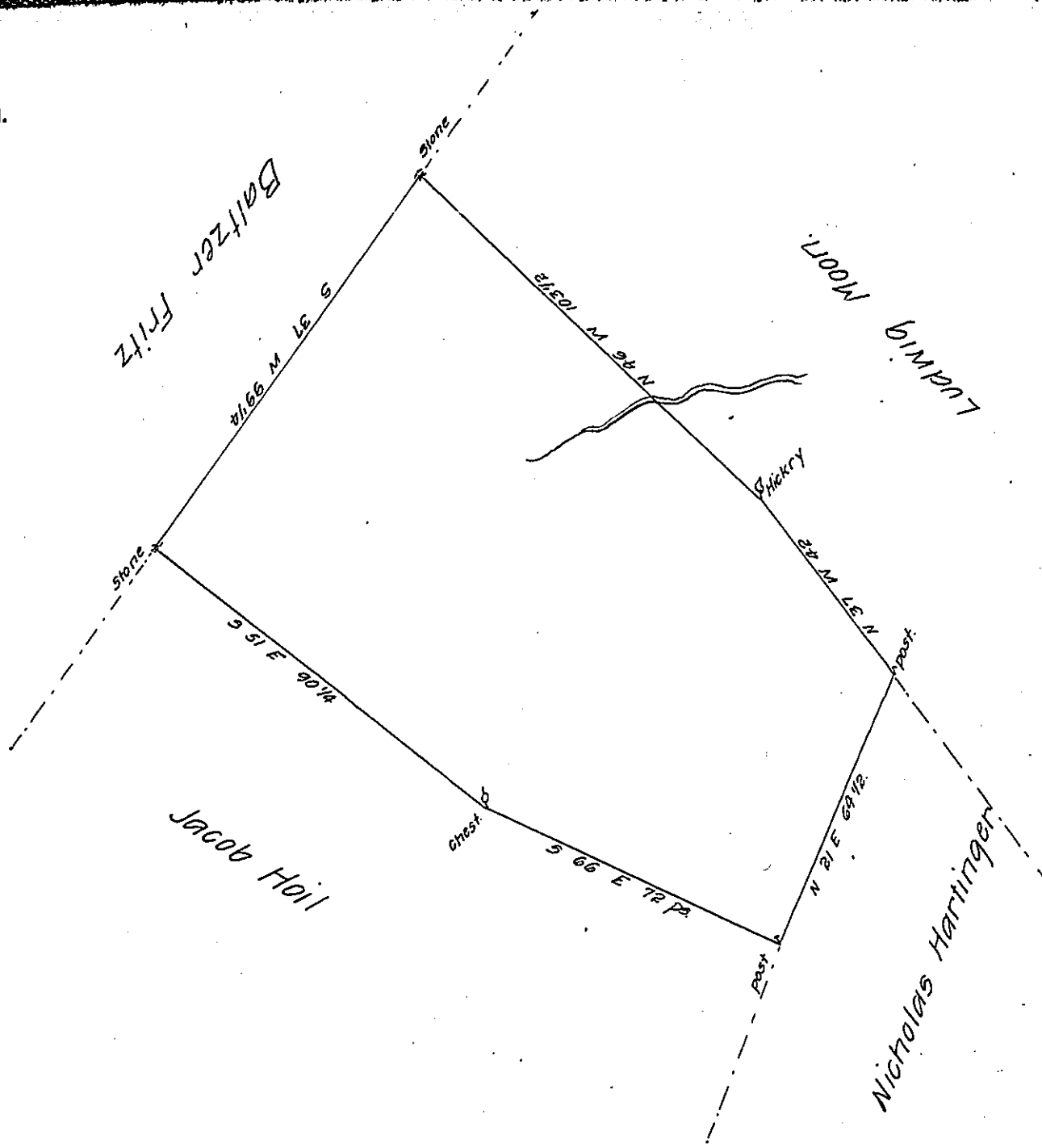


FORM NO 1.



Draught of a tract or Parcel of land Situate in Brecknock town-
 ship in the County of Berks, Containing 79^{as} & the allow^e of six P
 Gent for roads &c. now the Property of Christian Stoltzfus, being part
 of a larger tract of 330^{1/4}^{As} & Allowance aforesaid Surveyed unto
 Francis Marshall by virtue of his warrant dated the 23^d day of
 November 1749 Surveyed off the 24th day of January 1793.

Wm. Wheeler. D. Surv.

To Daniel Brodhead Esqr.
 Surv^r Gen^l of Pennsylv^a

IN TESTIMONY that the above is a copy of the original remaining on file in
 the Department of Internal Affairs of Pennsylvania, made
 conformably to an Act of Assembly approved the 16th day of
 February, 1833, I have hereunto set my Hand and caused
 the Seal of said Department to be affixed at Harrisburg,
 this twelfth day of December 1907.

Henry Howells
 Secretary of Internal Affairs.